

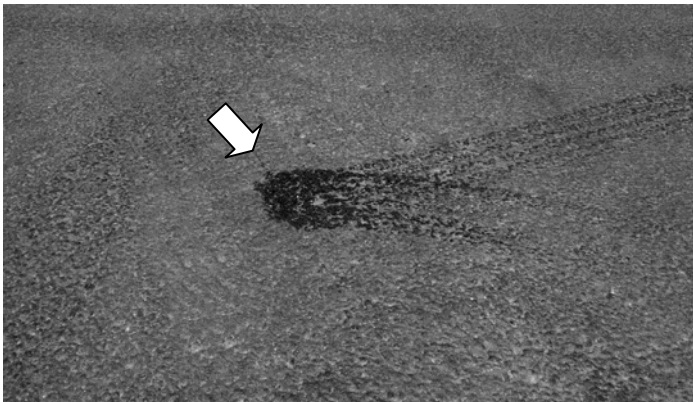
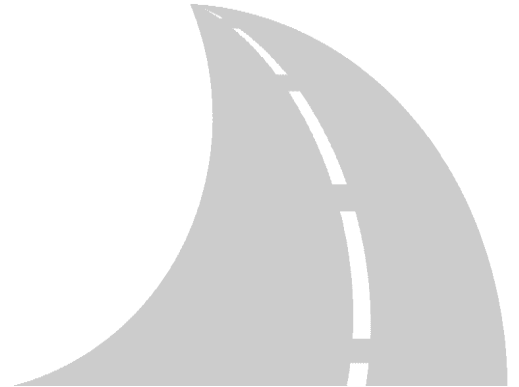
STREETS UPDATE

Why was my street closed?

Your street had HA5™ High Density Mineral Bond installed which is a pavement preservation treatment that significantly extends the life and quality of streets in desert climates. The amount of cracking and pot holes over time will be reduced. Streets in good condition also support higher property values.

What to expect following installation:

While HA5™ significantly extends the life and improves the condition of the pavement surface, there are some unique qualities you should be aware of. Most significant is the scuffing and marking that takes place for the first several weeks following the installation and again with higher temperatures during the first several months post installation. Less pronounced marks may be seen after this timeframe, but to a much lesser degree, during hotter summer days. THIS IS NORMAL, EXPECTED, and TEMPORARY.



Slow moving and tight turning traffic will slightly scuff the HA5™, leaving marks and tracks on the pavement. Again, THESE MARKS ARE TEMPORARY AND EXPECTED. Over time, the markings on the pavement will heal themselves with regular traffic. Traffic is actually an essential part of the curing process.

What to expect following installation (long-term):

The key to effectively preserving pavement is taking action early in the pavement's life. When HA5 is applied early in a pavement's life, you can anticipate that your street will experience less cracking, pot holes, and other manifestations of aging pavement. Your street will also have a blacker appearance as it ages which is generally considered more aesthetically pleasing and is attributed to higher property values in a community.

For questions, please call:

XXX-XXX-XXXX
XXX-XXX-XXXX

